



**SONARAY**  
**BrightScape**  
**LED Flood Light**  
ECO Choice  
2014/04



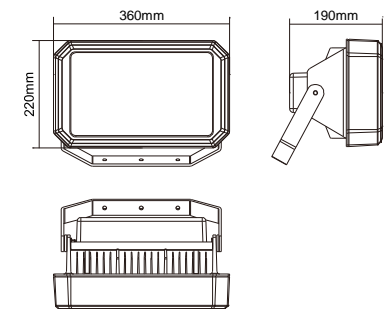
### BrightScape Flood Light

### Specification

#### FL-2100

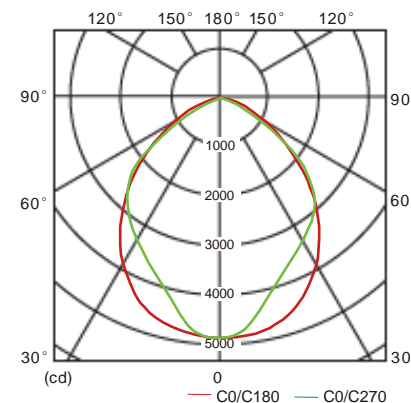
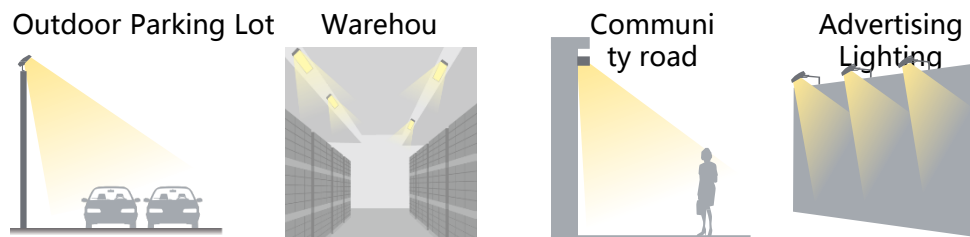


Power: 100W  
 Luminous flux: 10,000lm  
 Luminous efficiency: 100lm / w  
 CCT: 5000K  
 CRI:  $\geq 65$   
 Light angle: 95 °  
 Material: Aluminum  
 Power supply : Internal  
 Input voltage: AC90-277V, 50/60Hz  
 Power factor:  $\geq 0.95$   
 Weight: 7.5kg  
 Working temperature: -20 °C ~ +40 °C  
 Design Lifetime:  $\geq 60,000$  hrs



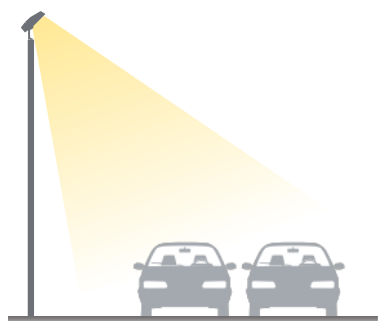
SONARAY BrightScape series Floodlight is a high efficacy energy-saving lighting product. Perfect combination of high power COB chip technology and special lighting diffusers reaching high output with 100lm / w and without glare. Producing high brightness, the light remains comfortable to the human eye.

### Main Applications



FL-2100	
1	4876
2	1219
3	542
4	305
5	195
6	135
7	100
8	76
9	60
10	49
11	40
12	34
13	29
14	25
15	22

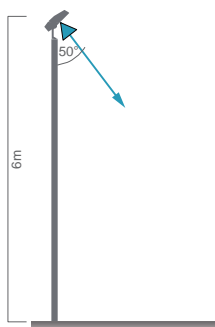
H(m)                      E(lx)



Design Example : Outdoor Parking Lot

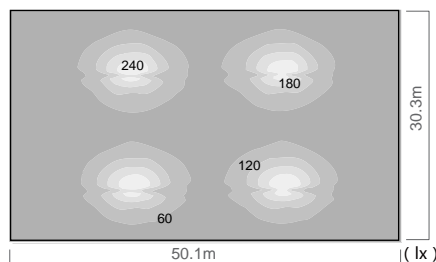
Design illumination : 50lx

Vertical section



Traditional 250W  
HID Flood Light

Horizontal illuminance distribution

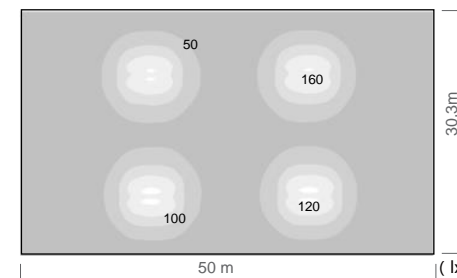


Lamp	Traditional Lamp
Light source	HID Light source
Luminous flux ( lm )	16,425
Lifetime ( hrs )	8000
Installation Height ( m )	6
Maintained average illuminance ( lx )	51
Total Power ( W )	2400



LED Flood Light 100W  
FL-2100

Horizontal illuminance distribution



Lamp	FL-2100
Light source	LED
Luminous flux ( lm )	10,000
Lifetime ( hrs )	60,000
Installation Height ( m )	6
Maintained average illuminance ( lx )	53
Total Power ( W )	800

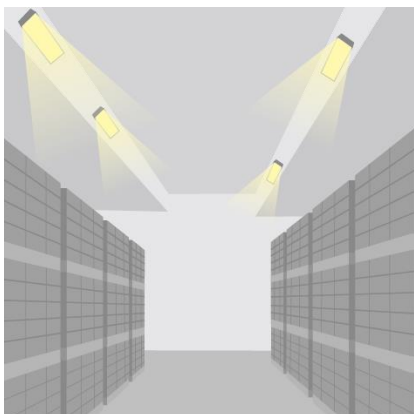
Same  
brightness

Energy saving  
66%

Same  
number of  
fixtures

5 times  
longer  
lifetime

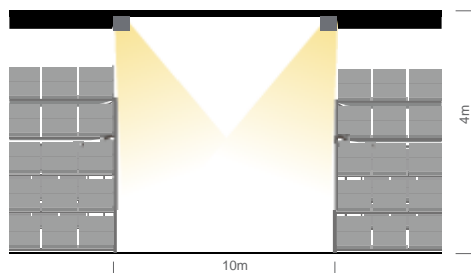
※ The traditional lamp power of light source is about 80% of the Total Power ..  
 ※ The luminous flux of whole lamp is about 50% of light source.



Design Example : Logistic Warehouse

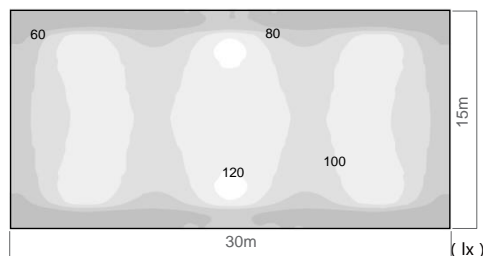
Design illumination : 75lx

### Vertical section



Traditional 250W HID Flood Light

### Horizontal illuminance distribution

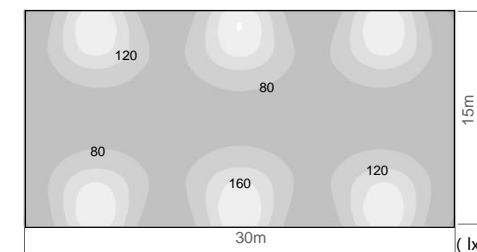


Lamp	Traditional Lamp
Light source	HID Light source
Luminous flux ( lm )	16,425
Lifetime ( hrs )	8000
Installation Height ( m )	4
Maintained average illuminance ( lx )	88
Total Power ( W )	1800



LED Flood Light 100W FL-2100

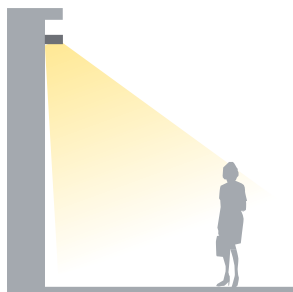
### Horizontal illuminance distribution



Lamp	FL-2100
Light source	LED
Luminous flux ( lm )	10,000
Lifetime ( hrs )	60,000
Installation Height ( m )	4
Maintained average illuminance ( lx )	92
Total Power ( W )	600

- Same brightness
- Energy saving 66%
- Same number of fixtures
- 5 times longer lifetime

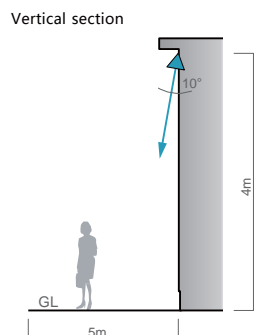
※ The traditional lamp power of light source is about 80% of the Total Power ..  
 ※ The luminous flux of whole lamp is about 50% of light source.



Design Example : Community road

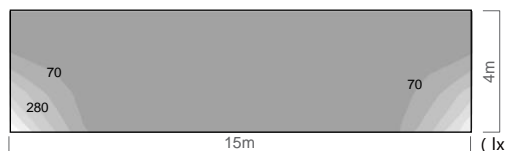
Design illumination : 20lx

### Vertical section



Traditional 250W HID Flood Light

Horizontal illuminance distribution

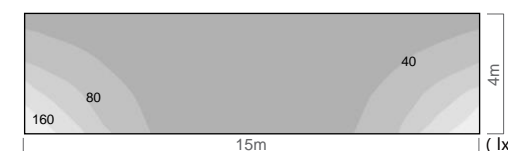


Lamp	Traditional Lamp
Light source	HID Light source
Luminous flux ( lm )	16,425
Lifetime ( hrs )	8000
Installation Height ( m )	4
Maintained average illuminance ( lx )	31
Total Power ( W )	300



LED Flood Light 100W FL-2100

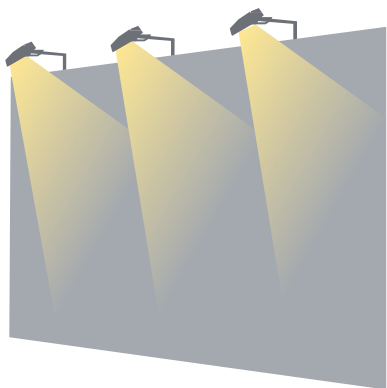
Horizontal illuminance distribution



Lamp	FL-2100
Light source	LED
Luminous flux ( lm )	10,000
Lifetime ( hrs )	60,000
Installation Height ( m )	4
Maintained average illuminance ( lx )	38
Total Power ( W )	100

- Same brightness
- Energy saving 66%
- Same number of fixtures
- 5 times longer lifetime

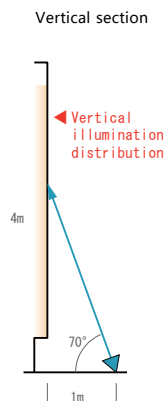
※ The traditional lamp power of light source is about 80% of the Total Power ..  
 ※ The luminous flux of whole lamp is about 50% of light source.



### Design Example : Advertising Lighting

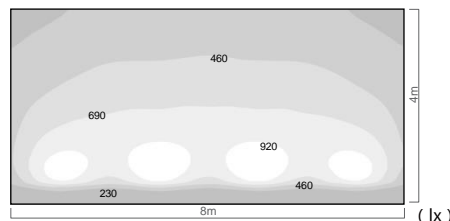
Design illumination : 500lx

#### Vertical section



Traditional 250W HID Flood Light

#### Horizontal illuminance distribution

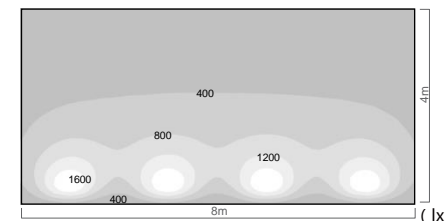


Lamp	Traditional Lamp
Light source	HID Light source
Luminous flux ( lm )	16,425
Lifetime ( hrs )	8000
Extension distance ( m )	1
Maintained average illuminance ( lx )	532
Total Power ( W )	1200



LED Flood Light 100W FL-2100

#### Horizontal illuminance distribution



Lamp	FL-2100
Light source	LED
Luminous flux ( lm )	10,000
Lifetime ( hrs )	60,000
Extension distance ( m )	1
Maintained average illuminance ( lx )	527
Total Power ( W )	400

Same brightness

Energy saving 66%

Same number of fixtures

5 times longer lifetime

※ The traditional lamp power of light source is about 80% of the Total Power ..  
 ※The luminous flux of whole lamp is about 50% of light source.